

# Lower Athabasca Regional Plan Phase 2 Consultations

---

## Clean Air Strategy Alliance

Crystal Damer  
Executive Director, Land Use Secretariat



Sept 29, 2010

**Government  
of Alberta** ■

# Crystal Damer

## Executive Director, Land Use Secretariat

---

Crystal has worked for the Government of Alberta since 1994 in business development, investment, tourism, administration, information management and project management. In October 2008, she joined the newly-formed Land Use Secretariat, which is overseeing the implementation of the province's Land-use Framework. As Project Executive Director, Crystal is managing the development of the seven regional land-use plans.



Sept 29, 2010

**Government  
of Alberta** ■

# Land-use Framework

---

## Public/ Stakeholder/ Public Consultation

- Fall 2006 – Focus Group Session
- December 2006 – Cross-Sector Forum
- April to December 2007 – Open Houses
- June to October – Stakeholder Working Groups
- May to October 2008 – Feedback on draft Land-use Framework
- Final Framework December 2008



# Land-use Framework

---

- Provincial leadership
- Balancing environmental with economic and social considerations
- Increased Certainty
  - ❑ Integrate and coordination of provincial policy
  - ❑ Align planning/decision making
- Encourage stewardship and conservation



# LUF Priority Actions

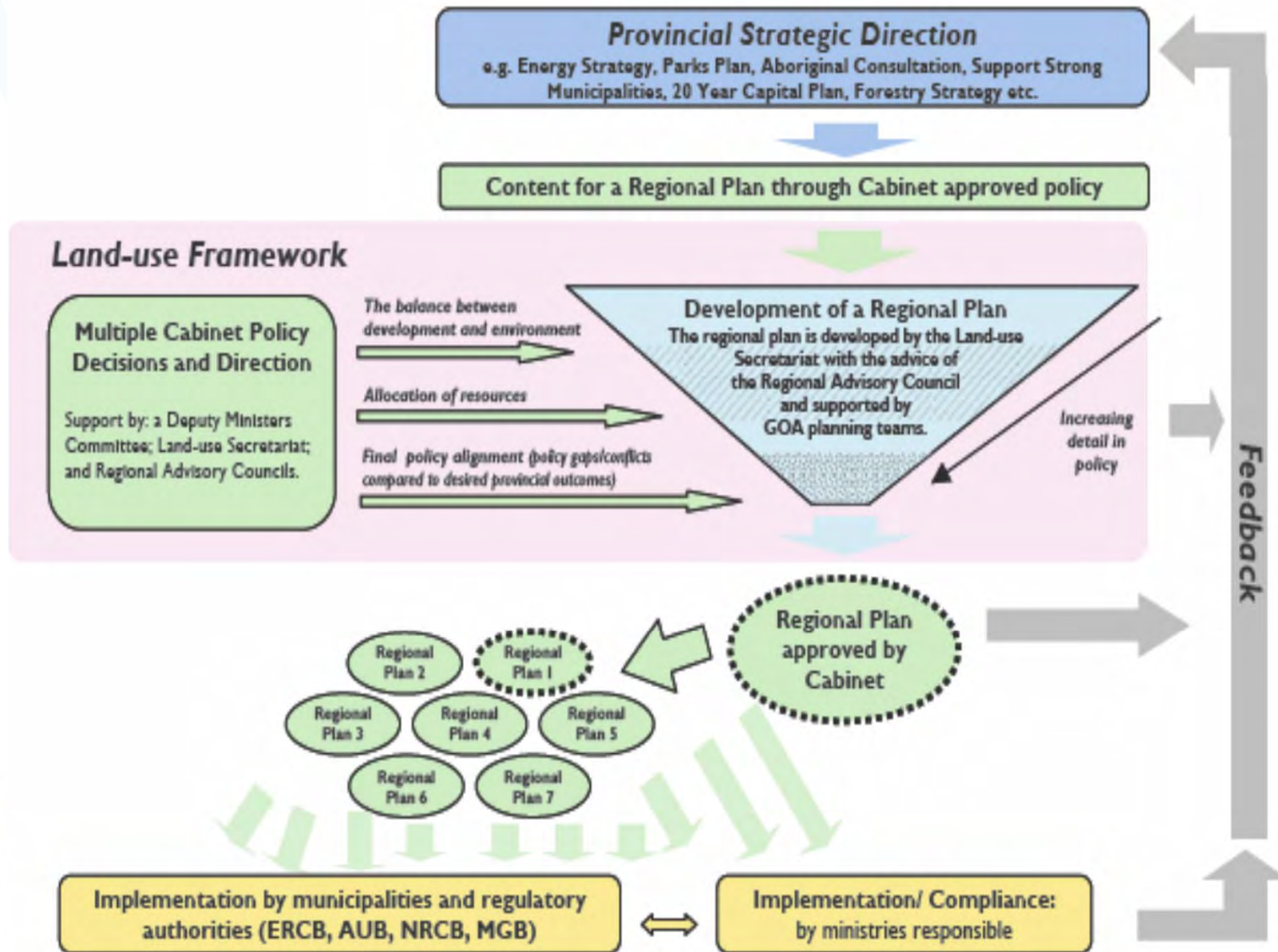
---

- Immediate priorities
  - ❑ Legislation to support the framework, Spring 2009
  - ❑ Development of regional plans for South Saskatchewan and Lower Athabasca regions
  - ❑ Completion of metropolitan plans for the Capital and Calgary sub-regions
- Policy gaps and areas of provincial interest to be addressed
  - ❑ Manage subsurface and surface activities
  - ❑ Reduce fragmentation and conversion of agricultural land
  - ❑ Develop a transportation and utility corridors strategy
  - ❑ Manage recreational use of public lands
  - ❑ Conserve and protect the diversity of ecological regions
  - ❑ Efficient Use of Land





# Land-use Process



# Regional Plans

---

- Define regional outcomes (economic, environmental and social) and a broad plan for land and natural resource use for public and private lands
- Align provincial strategies and policies at the regional level
- Determine specific trade-offs and appropriate land and natural resource management for specific landscapes within a region
- Define the cumulative effects management approach for the region and identify targets and thresholds





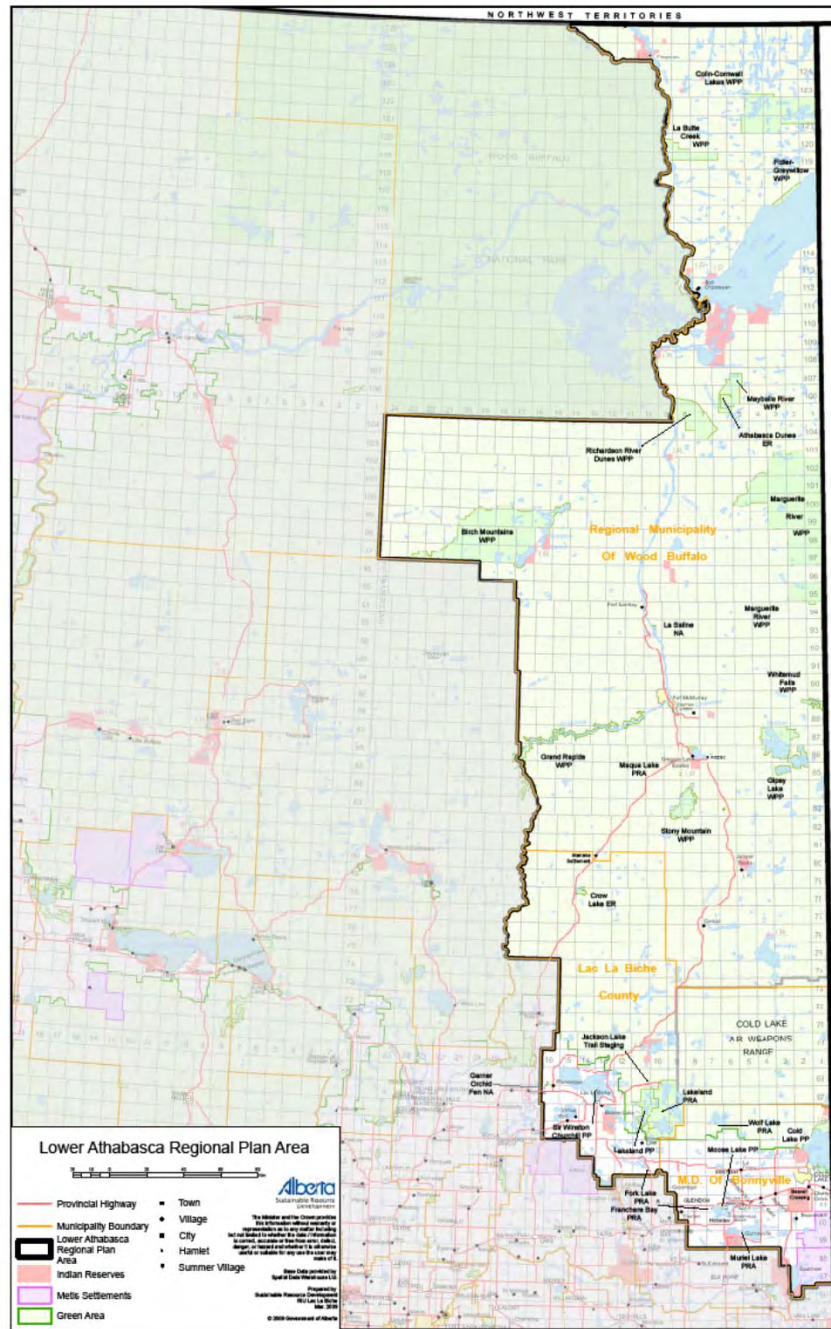
# Regional Plans: Built with Albertans

---

- Regional Advisory Councils established for each region
- Public, stakeholder, municipal, aboriginal consultation
- Legislated requirement to review at least every 10 years
- at least once every 5 years, appoint a committee to evaluate and audit the policies of regional plans to determine whether they are meeting the purposes and deliver a public report



# Lower Athabasca Regional Planning Area



# Lower Athabasca Regional Plan

---

- RAC established December 2008
- Terms of Reference for the Lower Athabasca Regional Plan approved by Cabinet and released in July 2009
- RAC met 13 times and concluded March 2010
- RAC's advice consists of:
  - ❑ Vision for the Lower Athabasca Region
  - ❑ Proposed Land Use Classification Map
  - ❑ 12 Advice sheets with supplemental information to the Vision



# Lower Athabasca Terms of Reference

---

RAC to:

- Assess 3 bitumen production scenarios, consider the environment and social implications
- Assess options for long-term forestry
- Identify conservation areas
- Identify tourism development opportunities with emphasis on the Lakeland Country
- Identify recreational development opportunities, including advice on effective management of recreational activities on provincial Crown land



# Lower Athabasca Terms of Reference

---

- The general location of future transportation and utility corridors and considerations that must be addressed by the Government in planning their specific locations
- The implications associated with the economic development scenarios and the municipal service needs of a growing population and labour needs
- The impacts to Aboriginal communities as well as treaty and other constitutional rights exercised by members of those communities



# Lower Athabasca Consultation – Phase 1

---

- 14 public/stakeholder sessions were held in the months of May and June 2009 building awareness of the Land-use Framework and Regional planning.
- Meetings have been held with the Aboriginal communities
- RAC received more than 100 submissions and members attended numerous meetings with stakeholders, municipalities, Aboriginal peoples and citizens



# Phase 2 Consultation

---

- Seeking public, stakeholder, municipal feedback on RAC's advice
- Not seeking advice on Government Policy.
- The results will be used by Government to develop a draft regional plan for the final phase of consultation.



# RAC's Advice

## Vision for Lower Athabasca

---

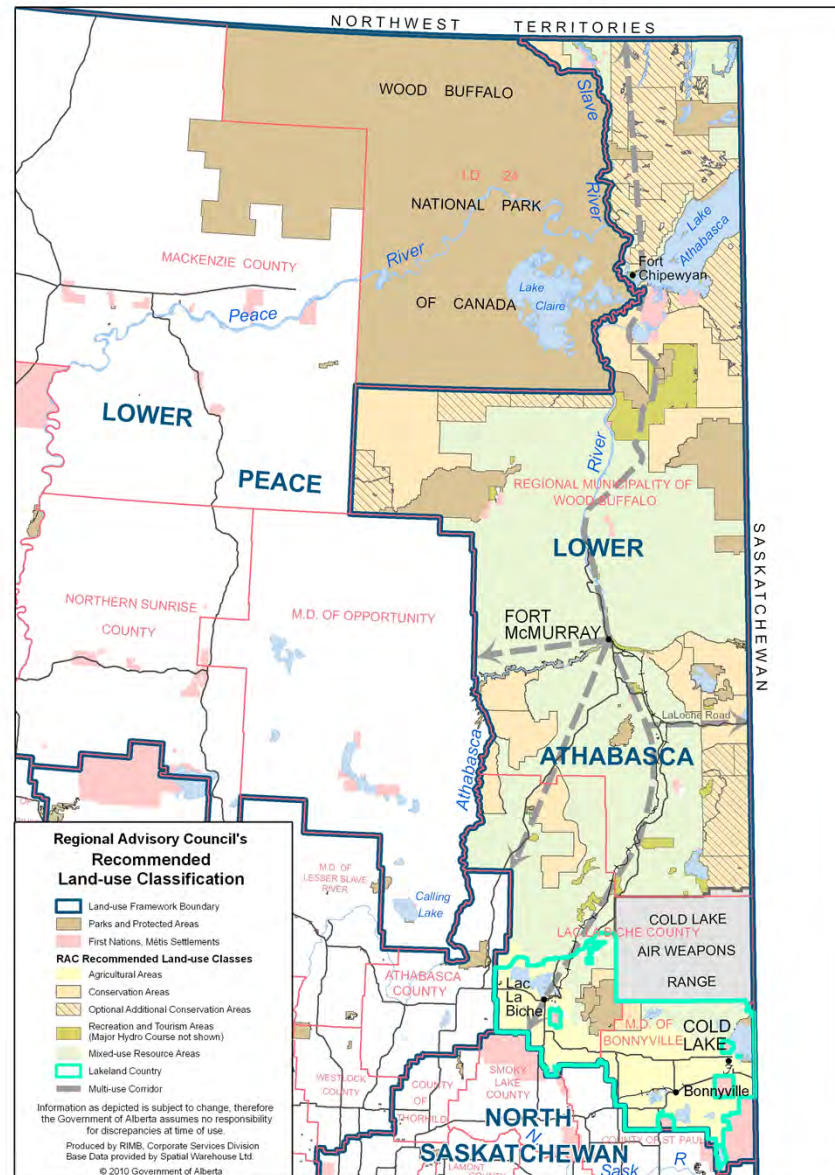
### Focused on:

- Economic Growth and Development
- Land Conservation Objectives
- Regional Air and Water Thresholds
- Human Development Considerations
- Land use classification map





# Lower Athabasca Regional Advisory Council's Recommended Land-use Classification



# Phase 2 Consultations

---

- Seeking public, stakeholder, municipal feedback on RAC's advice
- Not seeking advice on Government Policy.
- The results will be used by Government to develop a draft regional plan



# Phase 2 Consultations Process

---

- Consist of a series of facilitated workshops with stakeholders and municipalities, aboriginal consultation and public open houses across the region
- Use a discussion guide and survey to capture the feedback of Albertans. The discussion guide and survey will pose questions that will gauge Albertans support for RAC's advice
- The discussion guide and RAC's vision document and map will be accessible on-line as well as in hard copy during the workshop sessions.



# Phase 2 Consultations Timing

---

- Consultations are planned to take place in locations across the region, Edmonton and Calgary in September 2010.
- The sessions will be conducted by the Land Use Secretariat with the assistance of knowledgeable staff from key government departments.
- The results from this phase of consultation will be summarized and made publicly available in November.



# Next Steps – Drafting the Regional Plan

---

- Using RAC's advice and the feedback from phase 2 consultations, Government will draft the regional plan.
- Regional plan will:
  - ❑ Determine outcomes
  - ❑ Identify specific trade-offs that have been made
  - ❑ Include environmental frameworks with targets and thresholds
  - ❑ Confirm government's land-use classification map for the region



# Phase 3 Consultations

---

- Seek approval to release draft regional plan in the beginning of 2011
- Consult with stakeholders, municipalities, aboriginal peoples and the public on the regional plan
- Based on feedback through phase 3 and Cabinet's direction, the Final Regional Plan will be completed and approved by Cabinet in early fall 2011



# South Saskatchewan Terms of Reference

---

- Evaluate combinations of sector (agriculture, energy, forestry and the recreation and tourism) development scenarios considering:
  - ❑ That they all be successful
  - ❑ Population in the region will increase by about two million people by 2076
  - ❑ Water-use conservation, efficiency and productivity will improve by a minimum of 30 per cent by 2015.
  - ❑ Not exceed regional environmental thresholds (air/water) established by the Government of Alberta .
  - ❑ Conservation of valued landscapes and biodiversity
  - ❑ Improving protection of source waters



# South Saskatchewan Regional Plan Update

---

- RAC continues to meet
- RAC to provide its advice to government by December 2010
- Begin Phase 2 consultations in spring 2011





# Next Steps

---

- Beginning work on preparing for the 3<sup>rd</sup> regional plan – North Saskatchewan
  - ❑ Undertaking contracting for project support and modeling
  - ❑ Initial work underway on developing current trends, state of the region information
  - ❑ Need to ensure all relevant information compiled prior to calling the next RAC.



# Where will regional plans take us?

---

Integrated outcomes on air, water, land and biodiversity defined in the place

Much broader, innovative tools + an aligned and enhanced regulatory system

Place-based partnerships broadened and extended to integrate across air, water, land and biodiversity

Broad-based alliances with all parts of society to share responsibilities for integrated outcomes

Cumulative effects management drives continuous improvement approaches

# Questions

Website:

<http://www.landuse.alberta.ca>

